



COMPANY PROFILE

Contact details

New World Property Managers Contact details

2nd Floor Joina City

Cnr J Moyo Avenue, J Nyerere Way

Harare

Telephone (242)772655/773087

Email : marketing@nwpm.co.zw

Mission Statement

NEW WORLD PROPERTY MANAGERS mission is to offer commercial and residential property management and security services in an effort to grow the bottom line, increase market value of the property through creation of shareholder and stakeholder wealth within an aesthetically appealing and operational environment. NWPM's key asset for success lies in its dedicated line staff.

Vision Statement

NWPM Vision is to be the Property Experts of choice for the Real Estate and related services.

Values

- Honesty
- Humility
- Service
- Honour
- Respect

NWPM Executive Summary

New World Property Managers was formed in 2007 as a brain child of the investors of the Joina City who wanted an internal property management company. The company has perfected the art of property management and over time it has been increasing its skills base and is now ready to take on the management of other properties other outside of the Joina City. The company manages over 90 tenants in the retail and services sector, and over 9 office floor tenants. The Joina City retail area comprises 15,000 sqm while that of office facilities comprise 12,000 sqm. The office tower boasts 5 high speed lifts, a separate entrance to that of the retail area, and panoramic views of the Harare Cityscape. All the major telecommunications network service providers have communications infrastructure already installed in the building for ease of business administration functions.

New World Property Managers specialises in seeking ideal tenants for commercial spaces, leasing, space maintenance, management of human traffic, and security of commercial properties.

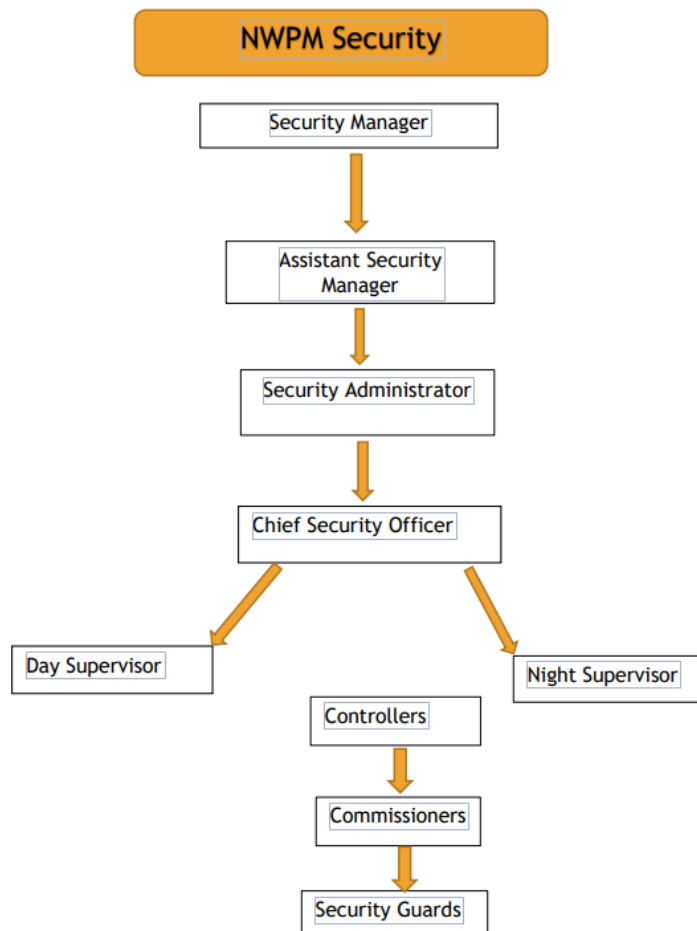
NWPM Security Division Executive Summary

NWPM Security was formed in 2006 to provide services to the Joina City and other sister companies.

Through continued strategic development and training, NWPM Security has achieved its mandate of making Joina City the best and well secured environment within the Harare Central Business District.

NWPM Security offers a wide range of cost effective services tailored to suit our clients and their security requirements in an ever changing environment. We man 18 sites within and around the Joina City as well as 120 CCTV cameras and a 24 hour control room which assists our supervision.

NWPM Security Division Organogram



Security Manager

Aggrey Mutasa joined the company at inception in 2006 and comes with a wealth of knowledge in the security and auditing sectors. He was responsible for the setting up of the security division which has a work-force of 75 members and is responsible for the overall 24hr security responsibility of the Joina City. The security personnel at the Joina City is one of the best in the country, and they are well trained in customer care, CCTV monitoring and early detection of security breaches, it is no wonder why the Joina City is the only commercial building in the city centre which does not have vendors on its pavements.

Prior to being at the Joina City Aggrey was with Zimnat's internal audit team.

Assistant Security Manager

Nason Gwenzi is responsible for operations and administration of New World Property Managers Security. He holds several qualifications which include Business and Advanced Security training. Nason has over 25 years of experience in the security sector, and has worked for several companies as a security Manager and Consultant.

Security Administrator

Brenda Chimbadzwa brings a wealth of experience as an HR Practitioner after having worked for several companies. Brenda also has experience in Finance with a nine year experience in NWPM. She holds several qualifications.

Chief Security Officer

Wonder Mutsika has vast experience in Security after having participated in the Zimbabwe Liberation Struggle and later attested into the Zimbabwe National Army, as a Commissioned Officer. Wonder has garnered experience in commercial security after having worked for several security companies upon retirement from the ZNA.

NWPM Security in Pictures



24 hour control room manned by NWPM Security at Joina City



Security capturing visitor details before access to the Office Tower is granted



Security managing bank que outside the Joina City, and COVID 19 WHO compliance.



Members of the public being directed into the Joina City via the Centenary Bridge Link

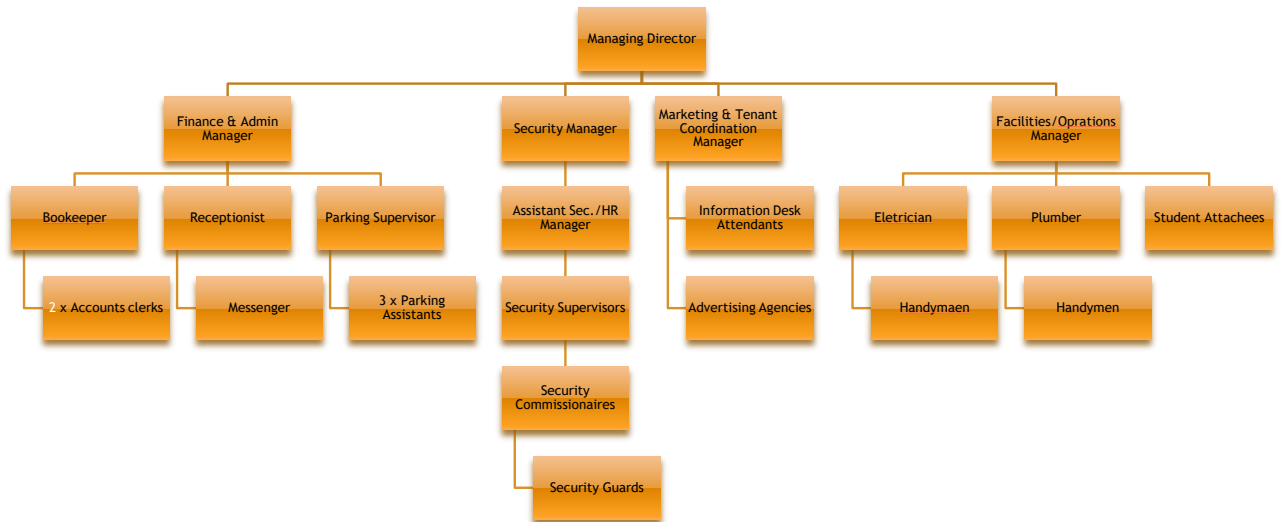


Security directing a motorist in the Joina City underground parking facility.



Security carrying out temperature checks, and members of the public sanitizing before admission to the Joina Office Tower is granted.

NWPM Organogram



The NWPM Security Division is supported by and incorporated in the NWPM operations as highlighted in the Organogram.